

Google Earth Tour Project Guide

Introduction

This handout will discuss how to create a Google Earth Tour and share it with others. This guide consists of a number of resources, including:

- Hints and Tips
- References and Tutorials
- Sample Expense Spreadsheet
- Google Earth Screen Guide
 - Opening Google Earth Screen
 - New Folder Screen
 - Complete Project Screen
 - Placemark Edit Screen
 - Placemark Information Screen

What is a Google Earth Tour?

A Google Earth Tour is a way for people to share geographic-based information. Using Google Earth, which combines the power of Google Search with satellite imagery, maps, terrain and 3D buildings, a personalized Google Earth Tour is ideal for school-based projects.

Sample educational uses of Google Earth for students include:

- Develop a map of their community
- Trace a family's ancestry
- Chart US imports and exports
- Map out the game results over the course of a sport season
- Document science-related information like drought, flooding, deforestation, etc...

A Google Earth Tour consists of a set of Placemarks “pinned” to Google Earth. Once the Placemarks are established and text and/or images have been included, the file can be shared with others and viewed through the Google Earth application. Viewers will learn about each locational Placemark based on the information provided by the tour creator.

Hints and Tips

Creating a Placemark: First go to the location you want to mark by typing the location's information (Ex: Gettysburg, PA) in the *Fly to* box on the top left of the Google Earth screen. Once Google Earth “flies” to the desired location, click the Placemark button in the top toolbar (yellow pushpin). The New dialog box opens and a Placemark icon appears in the 3D viewer. In the New dialog box you can add the name of the location as well as a description. You can also add your text information about this location you “visited”.

Edit a Placemark: Right-click the Placemark in the 3D viewer or in the Places panel. Choose Properties. The Edit Placemark dialog box appears.

Move a Placemark: Right click on the Placemark in the Places panel or in the 3D viewer. Choose, Properties. The Placemark is now “active” and can be dragged and dropped anywhere you choose. Click OK at the bottom of the box, the new position is saved and your map is updated.

Delete a Placemark: Right-click the Placemark in the 3D viewer or Places panel, choose *Delete*.

Placemark Sequence: As you work you might create Placemarks out of sequence if you have yet to find the appropriate information for a particular location, etc... You can change the order of your Placemarks in the Places panel. Click on the place you want to move, it will turn grey. You can then drag it to where you want it in the sequence.

Images in Placemarks: You can include images in Placemarks with an HTML command line. The image will need to be accessed over the Internet so it must be located on a Web-accessible server or stored online. To include an image, open the Placemark dialog box and use the HTML code shown below. For your own image, you will change the information that lies between the opening and closing quotation marks, based on the server location of your image files.

```

```

This sample image is number 5571832 and is on a server called static1.bareka.com.....which is a part of the Panoramio storage site (see Online Image Storage).

Online Image Storage: <http://www.panoramio.com>. This free Google application is easy to use and provides a great way to store images and reference them in a Google Earth file.

Sharing and Viewing the File

When you save your work all the Placemark information is saved in one file so sharing is easy. The only challenge is making sure to save your complete file and not just one of your Placemarks. So, when saving, make sure the project folder is highlighted (grey) in the Places panel. Once that is grey, right click on it and choose Save As. The Save file dialog box comes up and you can name the file and save it to the appropriate location. Notice that the file is being saved as a kmz file type.

In order to view the file, the receiver must save the attached file to their machine and then run it from there rather than running it from within their e-mail. It would be a good idea to provide this viewing information in the e-mail you send them with the file.

References and Tutorials

Google Earth User's Guide: <http://earth.google.com/userguide/v4/>

Marking Places: http://earth.google.com/userguide/v4/ug_placemarks.html

Editing Places and Folders: http://earth.google.com/userguide/v4/ug_editing.html

Google Earth Tutorials: <http://earth.google.com/outreach/tutorials.html>

Podcast-Creating Placemarks: http://cdn.libsyn.com/kokae/goo_earth_3.mp4

YouTube Video-Adding Placemarks: <http://youtube.com/watch?v=P82QGf0fP9E>

Copyright © 2008

Sample Expense Spreadsheet

TEAM MEMBERS:
TRIP DESTINATION:

	Day 1	Day 2	Day 3	Day 4	Day 5	Day 6	Day 7	TRIP TOTALS
Daily Miles Driven								
Cumulative Miles								
Flight Costs								
Fuel Cost								
Lodging								
Meals								
Car Rental								
Entertainment								
Souvenirs/Gifts								
Sight-seeing fees								
Recreation								
TOTAL DAILY EXP.								

NOTES

You must "fill" your gas tank each day

For a car, use 25 miles per gallon (MPG)

For a motor home rental, use 10 miles per gallon (MPG)

To determine how many gallons used that day (miles driven/MPG = gallons used)

Fuel costs = Gallons used X Current average price per gallon

Flight Costs: Check online for rates

Meals: Choose between \$20 to \$30 a day per person

Car Rental: Check online for rates

Sight-seeing fees are expenses for museums, visiting a national park, etc...

Souvenirs/Gifts

Recreation: Might be jet skis, bike rentals, going to a baseball game, etc...

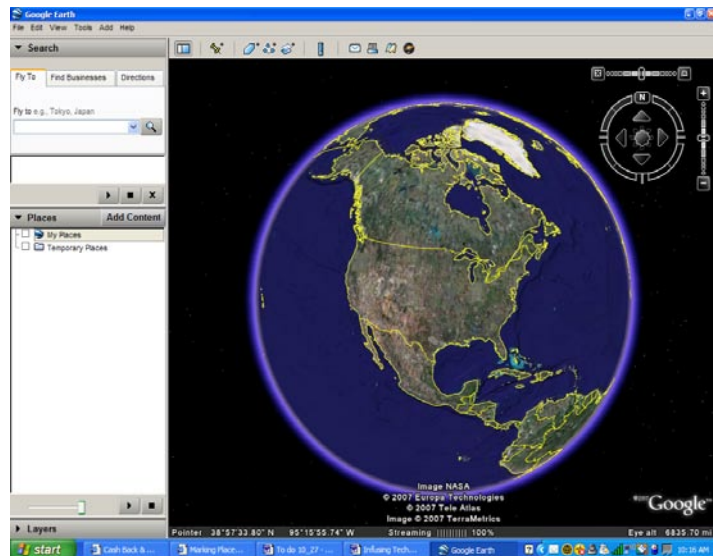
Google Earth Screen Guide

Opening Google Earth Screen

“Fly to” box - Used to find locations →

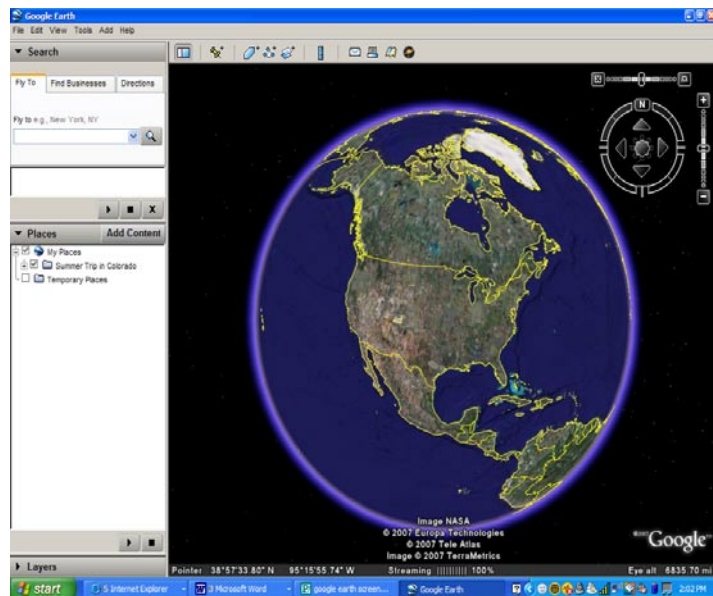
When Google Earth first starts, there are two default folders in the Places panel, My Places and Temporary Places.

Any other folders you create or Placemarks you establish will be shown in the Places panel.



Screen Showing New Folder

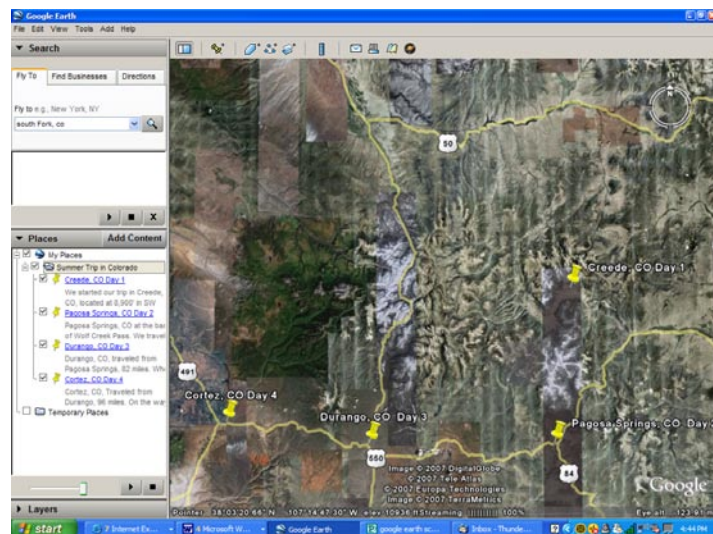
Summer Trip in Colorado is a new folder, under My Places. You will name and create your own folder under which you will develop your Placemarks. To create your trip folder, make sure My Places is highlighted (grey), then, at the top, choose Add → Folder. Name the folder appropriately. Later, to save your project, make sure the trip folder is highlighted, then right click on it and choose Save As. Give it the appropriate name (Disneyland, Pennsylvania tour, etc...) and save it to the location you are using for this project. This will be a kmx file that you can send via e-mail, place on a sever, etc...so others can access it.



Screen Showing Complete Project

There are now four Placemarks under the trip folder called *Summer Trip in Colorado*. This is the folder under which all the trip locations are set up. Since this image is “zoomed out”, you can also see all four Placemarks on the 3D viewer.

Also, notice an arrowhead in the lower right corner of the Places panel. If you click the arrowhead the tour will run, flying from Placemark to Placemark in the sequence they are listed in the Places panel.

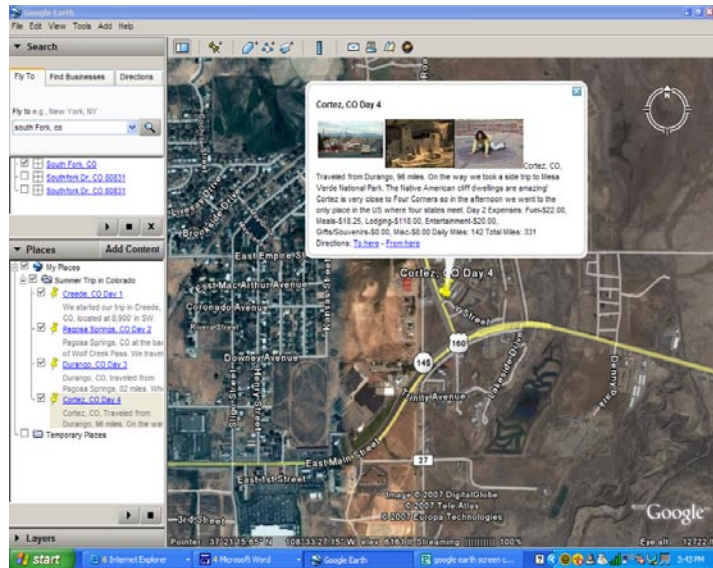


Copyright © 2008

Placemark Information

When you click on a Placemark (pin), you are in the Placemark view “mode”. The text and image information shows up so viewers can learn about the Placemark. Click anywhere else on the map and the Placemark box goes away.

When one Placemark is active, you can click on any other Placemark in the Places panel to fly to that location and see its Placemark information.



Placemark Edit Screen

To edit a Placemark, right click on the Placemark in the Places panel. You can make any number of changes, including adding references to images, etc...

You can also change the elevation of your view by choosing the View tab and changing the Range information. For uniformity, all Placemarks should have the same Range data.

